

(12) STANDARD PATENT APPLICATION (11) Application No. **AU 2024216414 A1**
(19) AUSTRALIAN PATENT OFFICE

(54) Title
Bin Bench

(51) International Patent Classification(s)
B25H 1/04 (2006.01) **B65F 1/14** (2006.01)
A47B 37/04 (2006.01)

(21) Application No: **2024216414** (22) Date of Filing: **2024.08.29**

(43) Publication Date: **2026.03.19**

(43) Publication Journal Date: **2026.03.19**

(71) Applicant(s)
Rodney John Maconachie

(72) Inventor(s)
Maconachie, Rodney

(74) Agent / Attorney
Rodney John Maconachie, PO Box 158, Thornleigh, NSW, 2120, AU

ABSTRACT

A portable / removable bench / table / work surface that temporarily attaches to a waste bin or garbage receptacle to provide a level stable surface to work or place items on. The bench may have a handle or handles, holes to enable tool hanging, feet to provide support from the bin or garbage receptacle and pivot fixings to enable rotation to enable access to waste storage area of the bin or garbage receptacle. The tabletop is recessed with a lip to contain any substance which may be located or spilt on the table e.g., liquid. The bench may also incorporate a retaining clip to enable it to be temporarily secured to the waste bin or receptacle.

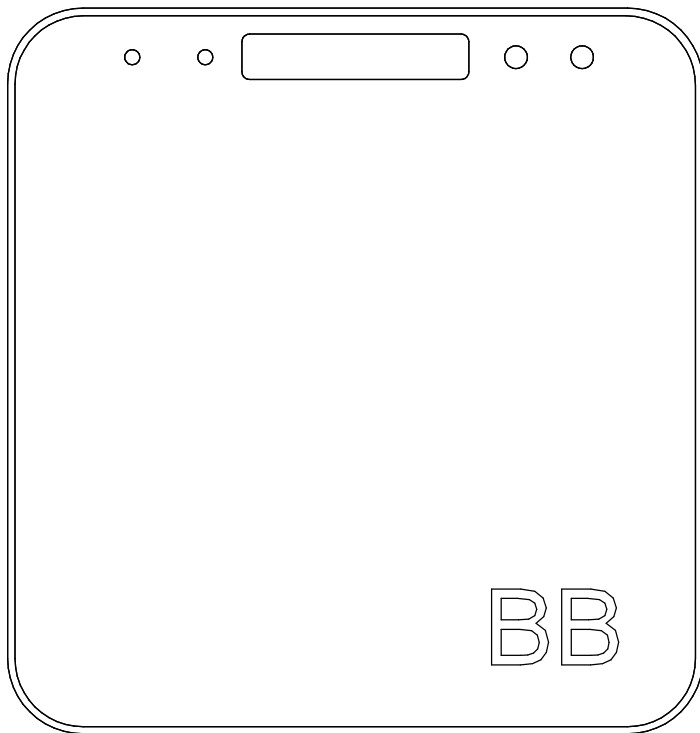


Figure 1

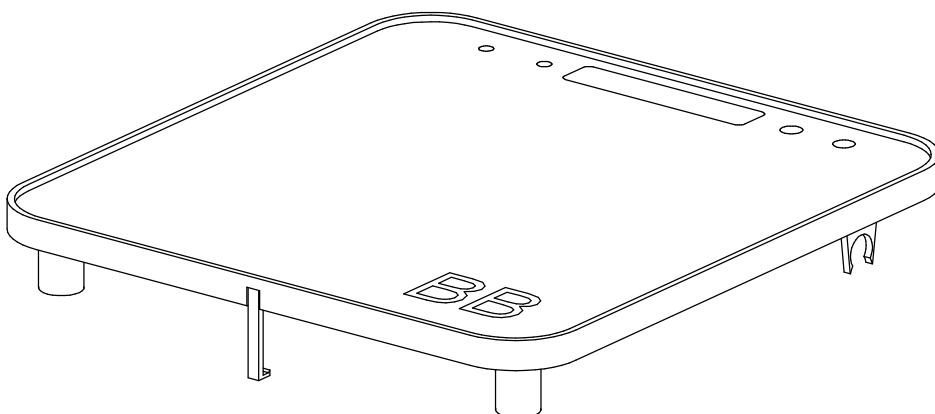


Figure 2

BIN BENCH

TECHNICAL FIELD

[001] The present invention relates to tables or work benches and in particular to portable tables or work benches.

[002] The invention has been developed primarily for use in conjunction with waste bins / receptacles and will be described hereinafter with reference to this application. However, it will be appreciated that the invention is not limited to this particular field of use.

BACKGROUND OF THE INVENTION

[003] Waste bins or receptacles generally have light duty lids to enable enclosure of contents and / or odour. This invention provides a portable / removable stable level surface to enable items to be placed during work, gardening, painting, or any other function which may require a level stable surface. It may also act as deterrent to rodents or similar from entering to access the contents of the bin or waste receptacle.

SUMMARY OF THE INVENTION

[004] An object of the claimed invention is to provide a device to attach to the waste bin or receptacle to provide a level stable surface to work from.

BRIEF DESCRIPTION OF THE DRAWINGS

[005] A detailed description of a preferred embodiment will follow, by way of example only, with reference to the accompanying figure of the drawings, in which:

Figure 1 illustrates a plan or top view of the bench / table

Figure 2 illustrates a rendered top perspective view of the bench / table Figure 1;

Figure 3 illustrates a front view of the bench / table Figure 1;

Figure 4 illustrates a right-side view of the bench / table Figure 1;

Figure 5 illustrates a left side view of the bench / table Figure 1;

Figure 6 illustrates a section view of the bench / table Figure 1;

DETAILED DESCRIPTION OF EMBODIMENTS

[006] The bin bench is a table constructed from a plastic material which attaches to the top of the waste bin or receptacle to provide a level stable base from which to work.

[007] The bench/table has support legs which attach to the bin / waste receptacle handles as show in Figure 1

[008] The bench/table may have a series of holes to act as tool storage and one or more to act as a handle or handles as shown in Figure 1

[009] The bench/table is constructed from a moulded plastic material.

[010] The bench/table has a perimeter raised edge to prevent spillage of surface content as shown in Figure 2

[011] The bench/table has feet to enable the bench to stand above the lid of the waste receptacle as shown in Figure 2

[012] The bench/table may have clips which attach the bin/waste receptacle as shown in Figure 4

[013] The bench/table may have a fastener at the front to enable attachment to the bin/waste receptacle to prevent the lid from opening as shown in Figures 2,3,4,5&6

[014] To install the bin bench, the following three step by step process can be used:

29 Aug 2024

2024216414

3

1. Position the bench over the top of the bin or waste receptacle aligning the clips over the handle and the feet in the correct position.
2. Once aligned push the top of the table to engage the clips with the handle of the bin/waste receptacle.
3. Secure the fastener's if required.

CLAIMS

1. A table which incorporates legs that attach to a bin/waste receptacle
2. The table of claim 1 wherein the table is made of plastic
3. The table of claim 2 wherein the plastic is polyethylene
4. The table of claim 3 wherein the plastic is polyvinyl chloride.
5. The table of claim 1 wherein there are four special legs that incorporate special clips
6. The table of claim 1 wherein there are fasteners to secure the table to the waste receptacle or bin
7. The table of claim 1 wherein the special legs incorporate the ability to securely fasten the table to the waste bin handle
8. The table of claim 1 where the table dimensions and size may be adjusted to suit a bin of varying sizes and shapes

2024216414 29 Aug 2024

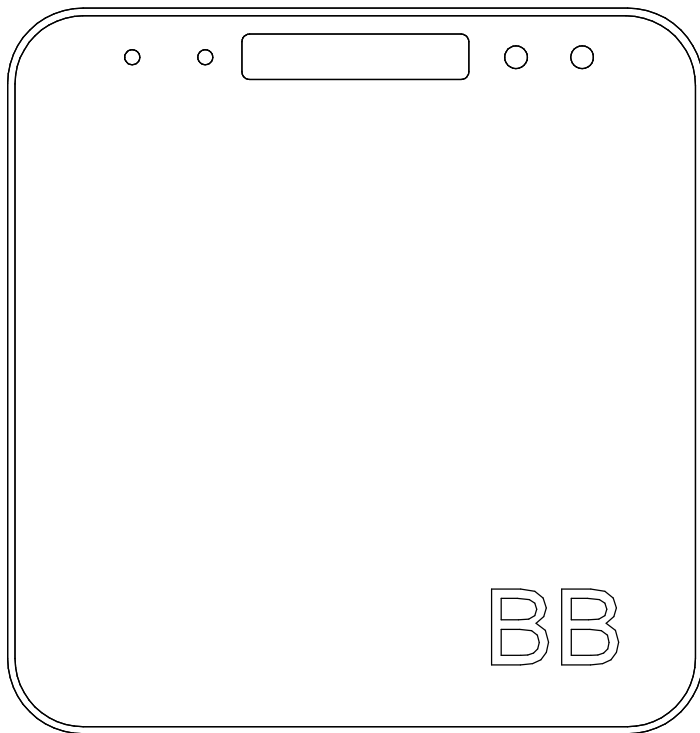


Figure 1

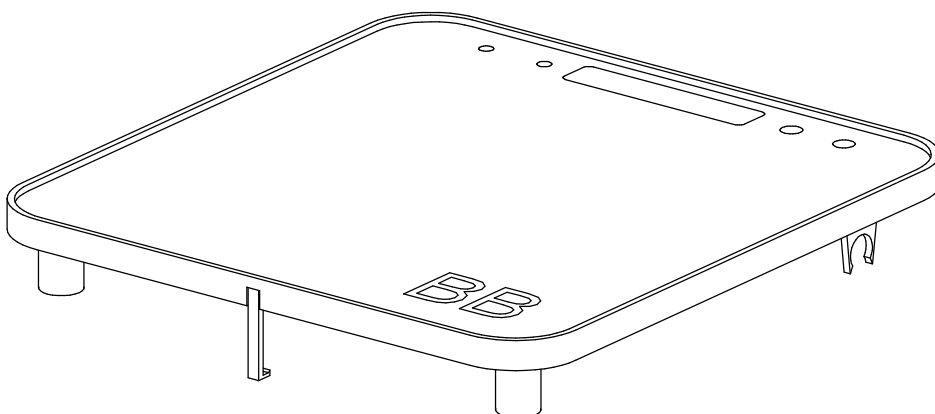


Figure 2

29 Aug 2024

2024216414

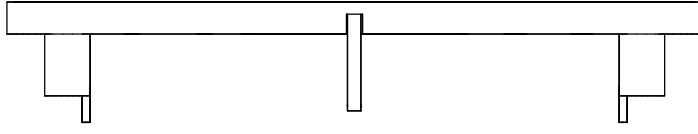


Figure 3

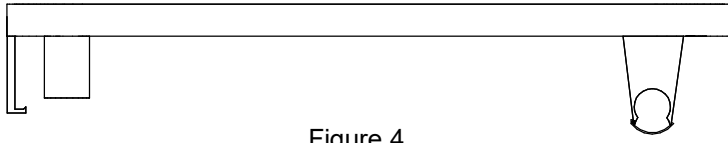


Figure 4

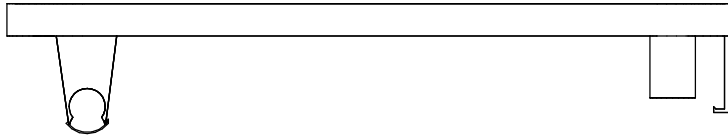


Figure 5

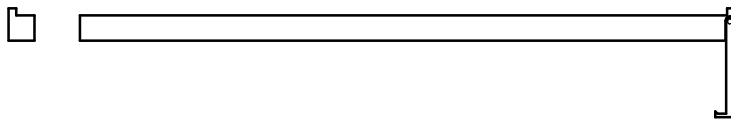


Figure 6