

(12) STANDARD PATENT APPLICATION (11) Application No. AU 2024216476 A1
(19) AUSTRALIAN PATENT OFFICE

(54) Title
Cricket Bat Knocking-in Attachment

(51) International Patent Classification(s)
A63B 60/42 (2015.01) **B27M 3/22** (2006.01)
A63B 69/00 (2006.01) **A63B 102/20** (2015.01)
B27M 1/02 (2006.01)

(21) Application No: **2024216476** (22) Date of Filing: **2024.08.30**

(43) Publication Date: **2026.03.19**
(43) Publication Journal Date: **2026.03.19**

(71) Applicant(s)
Nicholas Anthony Hewett

(72) Inventor(s)
Hewett, Nicholas

(74) Agent / Attorney
Nicholas Anthony Hewett, 50 Wrigley St, Maroochydore, QLD, 4558, AU

ABSTRACT

The innovation presented is an attachment designed specifically for use with a massage gun, aimed at facilitating the process of knocking in cricket bats. This attachment harnesses the mechanical action of a massage gun to knock in cricket bats efficiently and evenly, ensuring optimal performance and longevity of the bat. Constructed from either a modified cricket ball or a timber sphere, the core of the attachment is engineered to mimic the impact characteristics necessary for effective knocking-in. The inner layer comprises a custom-fitted plastic attachment piece, designed for seamless integration with a wide range of massage guns. This unique approach not only streamlines the knocking-in process but also reduces manual labour and enhances the precision of the knock-in procedure.

2024216476 30 Aug 2024



Cricket Bat Knocking-in Attachment

TECHNICAL FIELD

The invention pertains to the technical field of sports equipment maintenance, specifically providing a novel solution for preparing cricket bats for use through a modernised knocking-in process utilising massage guns.

BACKGROUND OF THE INVENTION

Traditionally, preparing a new cricket bat for use, known as the knocking-in process, requires significant time and manual effort. This process involves compressing the surface of the bat with a mallet or ball to enhance the performance and durability of the cricket bat. However, this method is labour-intensive and can strain the user. The invention seeks to address these challenges by introducing an attachment for massage guns to streamline and simplify the knocking-in process. Whilst there are professional machines available, this option is not available to the general public, due to cost and size of the machine.

SUMMARY OF THE INVENTION

This invention introduces a novel attachment for massage guns designed for the efficient and effective knocking-in of cricket bats. Available in two variants—cricket ball and timber sphere—the attachment facilitates a more uniform and precise preparation of the cricket bat, reducing manual effort and enhancing bat longevity. Its design ensures compatibility with a wide range of massage guns, offering ease of use, availability and affordability.

BRIEF DESCRIPTION OF THE DRAWINGS

The patent application includes a series of drawings that depict the innovative design and assembly of the cricket bat knocking-in attachment for massage guns. These drawings provide a detailed visual representation of the components, assembly process, and functionality of the attachment, which is available in two variants: one utilizing a modified cricket ball and the other employing a timber sphere. Below is a detailed description of each figure presented in the drawings.

Drawing Related to the Cricket Ball Variant:

- **Figure 1.0:** Provides an overview of the entire cricket ball attachment assembly, showcasing the integration of the modified cricket ball with a standard massage gun fitting.
- **Figure 1.2:** Shows a cross-sectional view of the attachment, illustrating the internal configuration that enables secure attachment to the massage gun.
- **Figure 1.3:** Demonstrates the dimensional specifications of the cricket ball attachment, including diameter and attachment point measurements.
- **Figure 1.4:** The standard massage gun fitting used in the cricket ball variant, indicating how it connects the cricket ball to the massage gun.
- **Figure 1.5 & 1.6:** Visual representation of complete attachment, with cricket ball.

Drawing Related to the Timber Sphere Variant:

- **Figure 2.0:** Presents an overall view of the timber sphere attachment assembly, illustrating how the wooden head integrates with a standard massage gun attachment.
- **Figure 2.1:** Shows a cross-sectional view of the attachment, illustrating the internal configuration that enables secure attachment to the massage gun.

- **Figure 2.2:** Displays the dimensional specifics of the timber sphere, including measurements essential for ensuring compatibility with the attachment mechanism.
- **Figure 2.3:** Offers a detailed view of the wooden head's surface, emphasizing the uniformity and quality of the material used for effective knocking-in.
- **Figure 2.4:** Visual representation of complete attachment, with timber sphere.

These figures collectively demonstrate the innovative design and functional aspects of the cricket bat knocking-in attachment, highlighting its versatility and ease of use. The detailed views and specifications provided in the drawings ensure a comprehensive understanding of how the attachment operates and is assembled, underscoring the patent's novelty and utility.

DETAILED DESCRIPTION OF EMBODIMENTS

The Cricket Bat Knocking-in Attachment features two main components: a modified cricket ball or timber sphere and a plastic fitting for attachment to massage guns. This design ensures compatibility across various massage gun brands, providing a controlled, efficient knocking-in process. The invention allows for precise impacts, reducing preparation time and physical strain on the user. By making the knocking-in process more accessible and effective, this attachment enhances the performance and durability of cricket bats, offering significant advantages over traditional preparation methods.

CLAIMS

1. An attachment for a massage gun designed to facilitate the knocking-in process of cricket bats, comprising:
 - a modified cricket ball or timber sphere with a central hole;
 - a custom-fitted plastic attachment piece for seamless integration with massage guns.
2. The attachment of claim 1, wherein the cricket ball variant is utilised
3. The attachment of claim 1, wherein the cricket training ball variant is utilised
4. The attachment of claim 1, wherein a hard plastic ball variant is utilised
5. The attachment of claim 1, wherein the timber sphere variant is utilised
6. The attachment of claim 1, designed for quick and secure attachment to a wide array of massage guns / brands / like-minded hand held machines with changeable attachments, ensuring compatibility and ease of use.

Figure 1.0

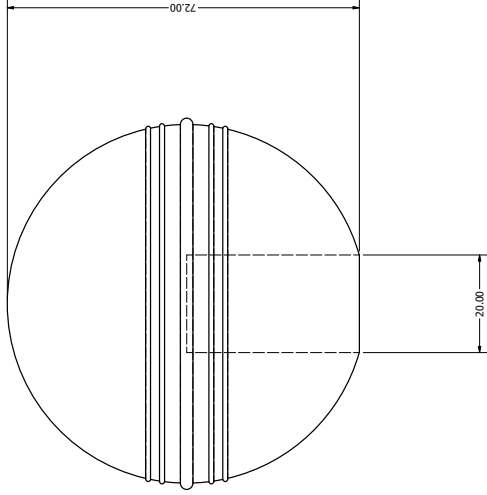


Figure 1.3

Leather Cricket Ball

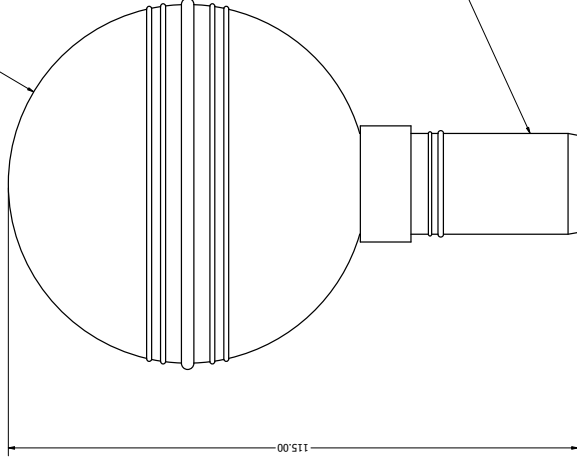


Figure 1.2

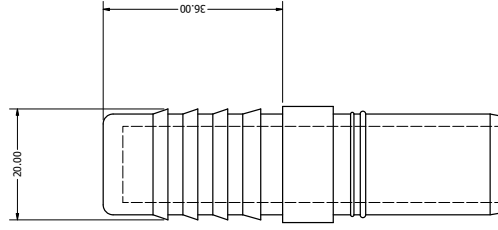


Figure 1.4

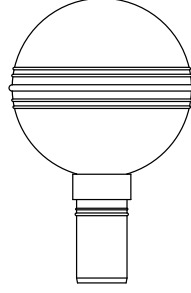


Figure 1.5



Figure 1.6



DRAWN	7/02/2024	TITLE	
CHECKED			
QA			
MFG			
APPROVED			
SIZE	D	DWG NO	Assembly1
SCALE	2:1	REV	
			SHEET 1 OF 1

Figure 2.0

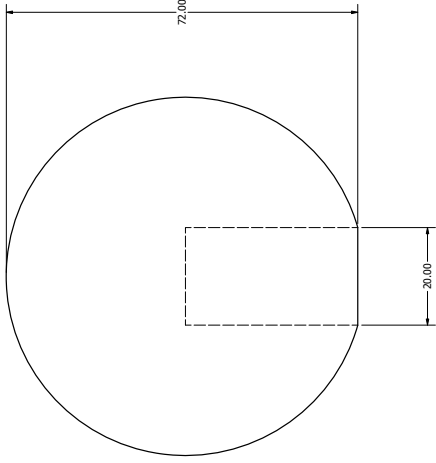


Figure 2.2

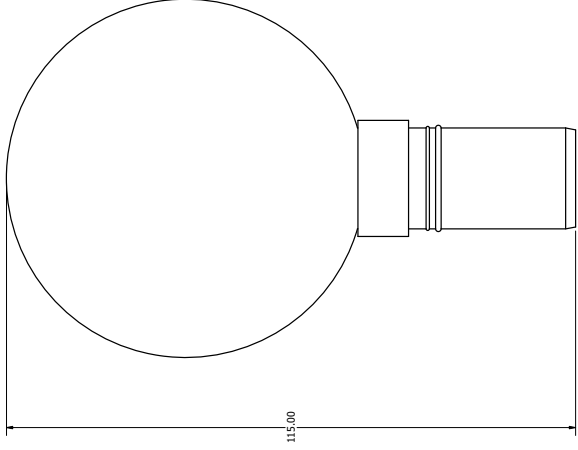


Figure 2.3

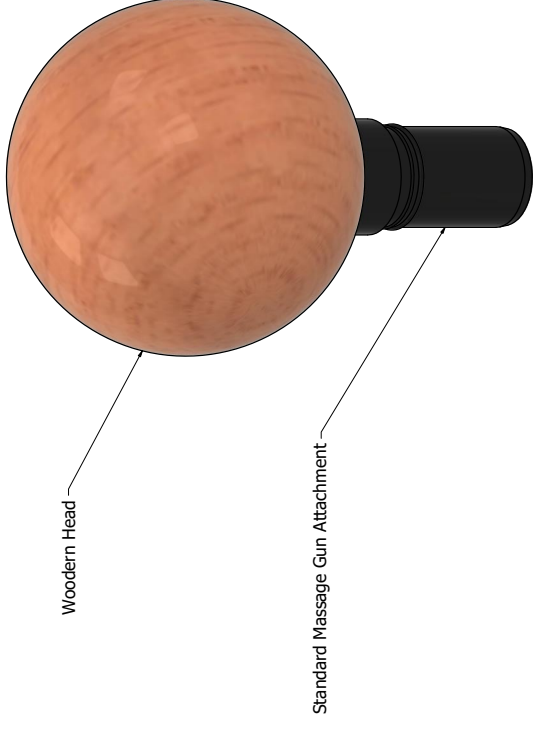


Figure 2.1

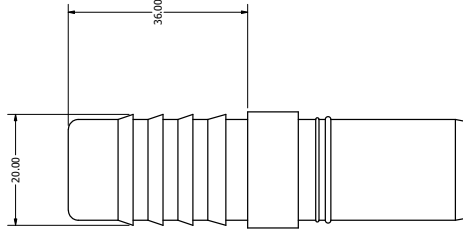


Figure 2.4



DRAWN	21/02/2024	TITLE	
CHECKED			
QA			
MFG			
APPROVED			
SIZE	D	DWG NO	Timber Attachment
SCALE	2:1	REV	
			SHEET 1 OF 1

2024216476 30 Aug 2024



2024216476 30 Aug 2024

